



**BUILDING SYSTEMS YOU CAN RELY ON  
STRENGTH. QUALITY. DURABILITY**





# CONTENTS

Why Us? .....	4	Covered Dairy Shelters .....	21
History .....	5	Formsteel Dairy Sheds .....	22
Formsteel Building System Advantages .....	6	Coverfast Farm Shelter Range .....	23
Formsteel Building System Products .....	7	Coverfast Building Range - Gable Designs .....	24
Formsteel's Strength of Connection .....	8	Coverfast Building Range - Mono Pitch Designs .....	25
Formsteel Buildings .....	9	Formsteel Mezzanine Floors .....	26
Retail Machinery Shop 24X24m .....	12	Tilt Slab Design Incorporated with Formsteel .....	27
Large 50m Clearspan Building .....	13	Formsteel Bird Proofing .....	28
Large Formsteel Canopies .....	14	Tray Flooring – Two Profiles and Various Thicknesses and Depths .....	29
Heavy Duty Frames Incorporating Gantry Crane Capability .....	15	Clear, Easy to Follow Construction Plans .....	30
Formsteel Hangars .....	16	Colour Coded Connection Details .....	31
Formsteel Storage Units .....	18	Formsteel Freight Loads .....	32
Formsteel Shed Houses.....	20		



# WHY US?

## ALRITE STEEL & SERVICES NZ LIMITED

Alrite Steel & Services NZ Limited imports, stocks and distributes all types of raw steel products including Steel Coils for Steel Buildings, with warehousing in Auckland, Tauranga and Christchurch.

Proudly Kiwi owned and operated, "Formsteel" Brand of Building Systems has been produced since 1972.

Formsteel Brand of Buildings is your answer to premium steel spaces made from quality materials and the expertise that come with 45+ years of experience.

We continually strive for STRENGTH, QUALITY and DURABILITY!

Strength – Every building we design is engineered to meet the conditions and the requirements of those conditions.

Our designs ensure your assets will be protected at all times with Formsteel.

Quality – Formsteel Brand puts quality where it matters. Durable, lightweight, hi-tensile, galvanised steel brings the quality you desire as an owner. Quality doesn't cost, it pays.

Durability – Using only the finest materials with internal and external galvanising allows us to provide you with a durable structure that has been tested in the harshest of elements. In compliance to New Zealand Building Code, Alrite Steel Coils used for your Formsteel Buildings are backed by Alrite's 50-year Durability Statement.

Formsteel - Building Systems you can rely on!



# HISTORY

**1972**

Formsteel established as a roll forming company. Begins roll forming purlins, Sylo flooring, and slitting coil steel.

**1975**

Formsteel begins supplying carports and covered yards, using a new combined gutter/ beam method.

**1982**

Formsteel begins using Purlindek on farm buildings and small commercial buildings with timber poles and timber beams.

**1974**

Formsteel Develops the instantly successful Purlindek roofing profile, a 6m span roofing profile with a strong 75mm high water proof rib.

**1991**

The 50020 steel beam developed for larger spans and portal framed structures.

**1998**

Svelte Floor trapezoidal tray flooring developed to save on concrete use.

**2003**

Development of the 63020 beam – the largest cold formed member on the market to date, capable of clear spanning up to 45m.

**1992**

Formsteel starts manufacturing 270 deep purlins in 1.15mm and .95mm to maximize the 6m+ bay span with minimal deflection and roof movement.

**2004**

UniFloor flat tray profile embossed for superior lock/bond into the concrete topping.

**2010**

A first on the New Zealand market, the development of preformed ends on the Svelte Floor product that allows for faster onsite concrete laying.

**2013**

Pre nesting of rafters/columns and purlins at Formsteel (instead of onsite) is developed, saving time on sites

**2014**

Stitched-in bird proofing of 270 purlins developed

**2016**

Coverfast farm shelter range developed offering 24 models of Pre-engineered, easy to erect, farm shelters.

**2017**

Coverfast building range developed to provide pre-engineered shed to the market.

# FORMSTEEL BUILDING SYSTEM ADVANTAGES



## Freighting

Freight NZ wide at reasonable prices, and to Pacific Islands in Containers



## Handling

Framing can be carried around site by 1 or 2 men in a lot of instances.



## Lifting

Rafters and frames can be lifted into place using smaller equipment (e.g Tele handler, scissor lifts, smaller cranes, less cranes, less hire time)



## Positioning

Lighter framing members are easier to get in place for attaching.



## Fastening/Connection

Our unique plate connection has had 100% success rate and no failures. Plates are pre-drilled for accuracy. 1 tonne sheer strength per TEK screw.



## High Tensile Steel

Lighter gauge members, but superior strength with high grade tensile steel.



## Fully Galvanised

All framing is fully galvanized steel finish, requiring no painting onsite (unless extreme conditions).



## Price

Economical prices due to clever use of steel.

# FORMSTEEL BUILDING SYSTEM PRODUCTS



## **Purlindex Roofing**

Span up to 6m in 0.75mm gauge



## **Smartdek Roofing/Cladding (5 Rib)**



## **27095/270115 purlin**

Up to 10m clear span portal when nested



## **10075 Box section**

100 x 100mm Carport posts and framing



## **50020 Purlin/Rafter**

Up to 28m clear span portal when nested



## **63020 Rafter box section (+Stiffeners)**

up to 45m clear span portal



# FORMSTEEL STRENGTH OF CONNECTION



## Fastening/Connection

Our unique plate connection has had 100% success rate and no failures. Plates are pre-drilled for accuracy. 1 tonne shear strength per TEK screw.





# FORMSTEEL BUILDINGS



# FORMSTEEL BUILDINGS





# FORMSTEEL BUILDINGS



## RETAIL MACHINERY SHOP 24M X 24M





# LARGE 50M CLEAR SPAN BUILDING



# LARGE FORMSTEEL CANOPIES





# HEAVY DUTY FRAMES INCORPORATING GANTRY CRANE CAPABILITY



# FORMSTEEL HANGARS





# FORMSTEEL HANGARS



# FORMSTEEL STORAGE UNITS



# FORMSTEEL STORAGE UNITS





# FORMSTEEL SHED HOUSES





## COVERED DAIRY SHELTERS





# FORMSTEEL DAIRY SHEDS



# COVERFAST FARM SHELTER RANGE





## COVERFAST BUILDING RANGE - GABLE DESIGNS





# COVERFAST BUILDING RANGE - MONO PITCH DESIGNS



# FORMSTEEL MEZZANINE FLOORS



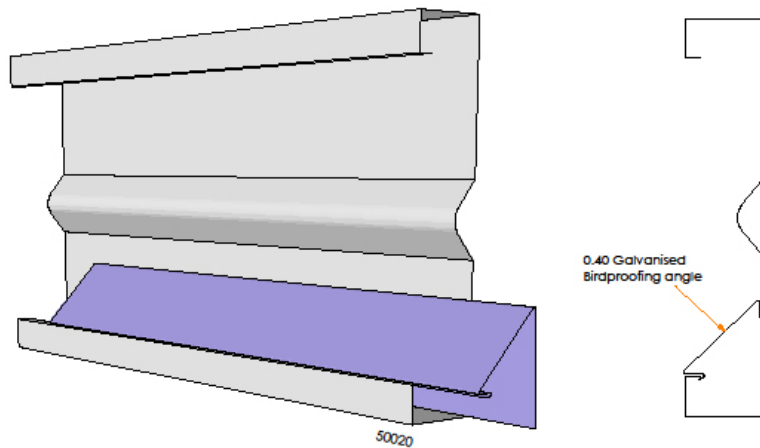


# TILT SLAB DESIGN INCORPORATED WITH FORMSTEEL

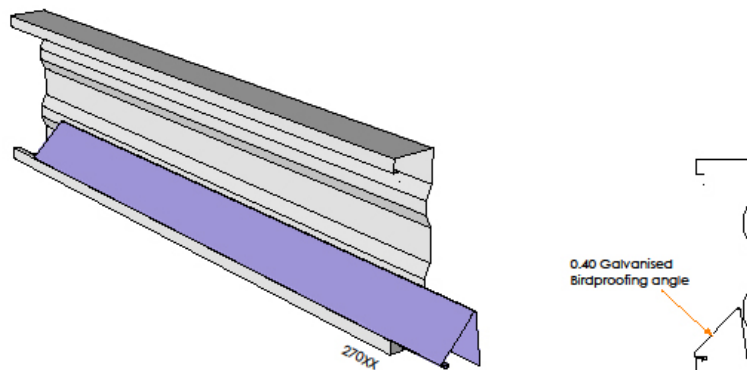




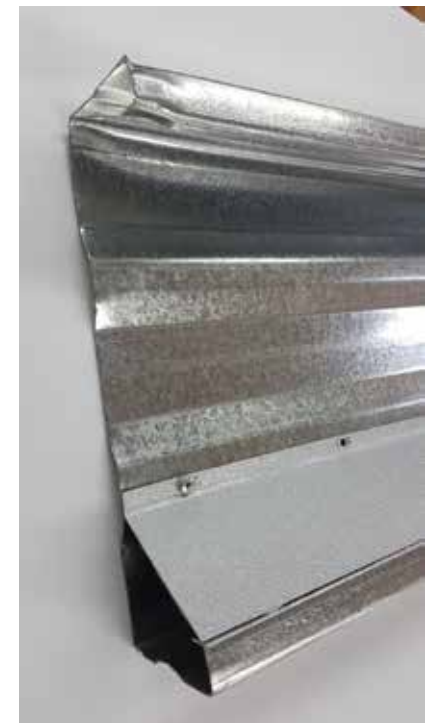
# FORMSTEEL BIRD PROOFING



**Machine stitched angle on 270 purlins - also available as a retro fit 'click in' version on both 270 purlins and 50020**



**Plastic Bird proofing blocks for the crown of Purlindek fits around the roof screw**



# TRAY FLOORING – TWO PROFILES AND VARIOUS THICKNESSES AND DEPTHS

**The many benefits of using Formsteel tray flooring include:**

- Simplicity.
- Easy to install, thanks to the precision of steel construction.
- Light in weight, so pieces are easy to place.
- Minimal components mean minimal hassle.
- No rolling lubrication used to maintain concrete/steel bond.
- Trapezoidal factory stop ending available - saving time and money.



**Preformed stop ends**

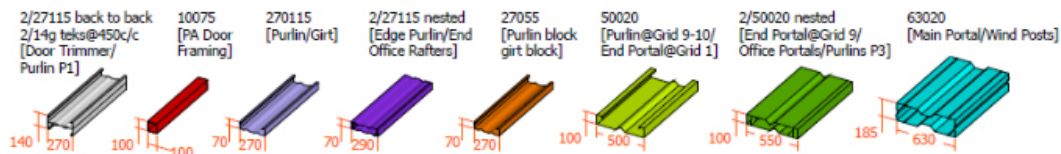
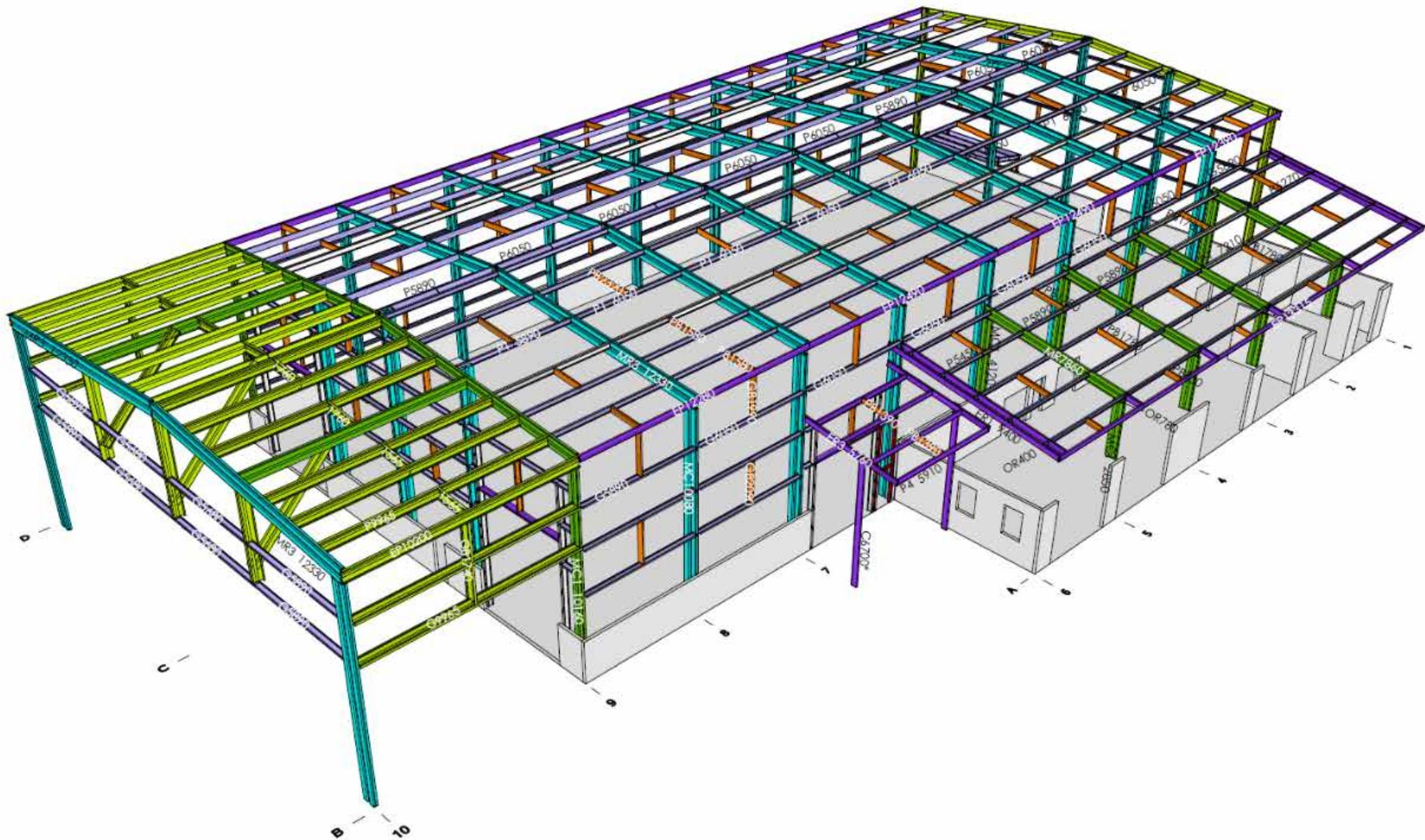


**UniFloor**





## CLEAR, EASY TO FOLLOW CONSTRUCTION PLANS



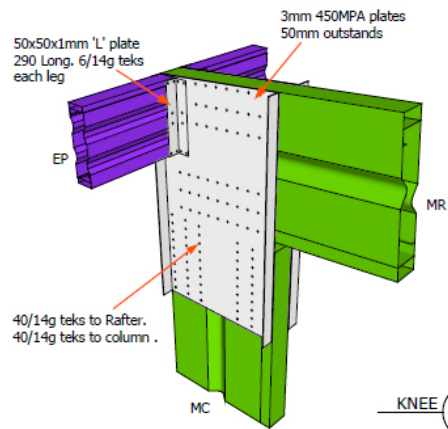
Project Number	B4799
Date	2015
Drawn by	Sim/Ash
Not to scale	
© Formsteel Technologies 2015	

Isometric

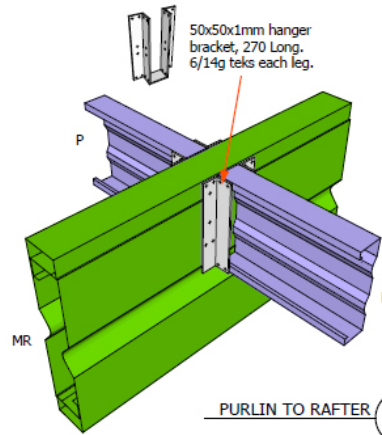
p01



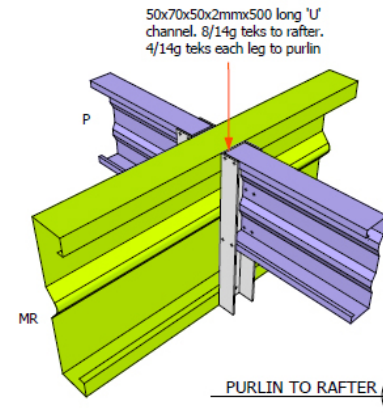
# COLOUR CODED CONNECTION DETAILS



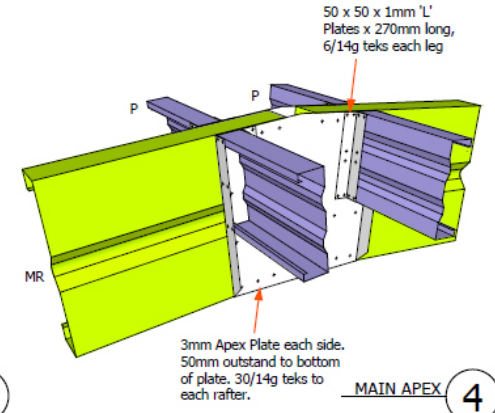
KNEE 1



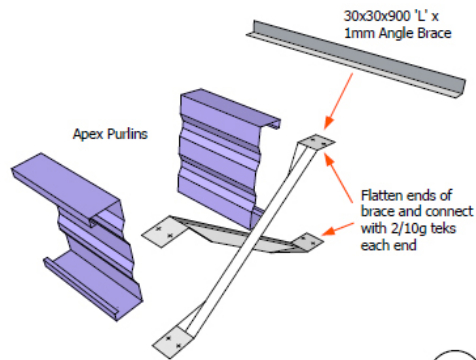
PURLIN TO RAFTER 2



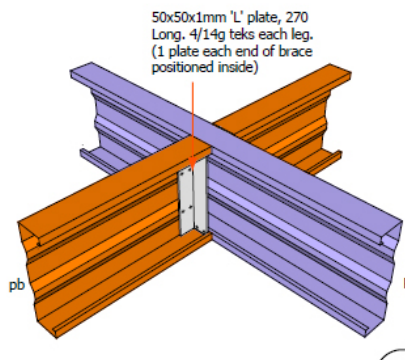
PURLIN TO RAFTER 3



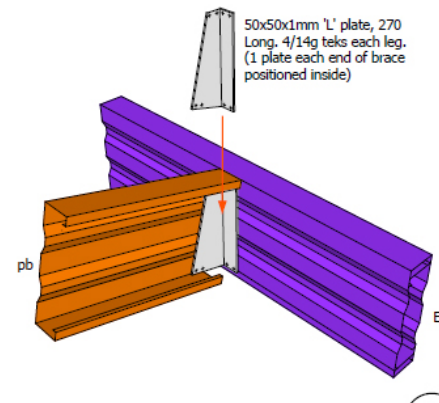
MAIN APEX 4



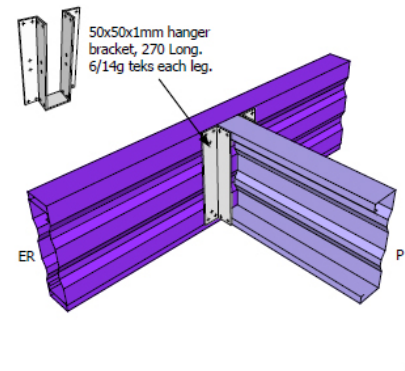
APEX BRACE 5



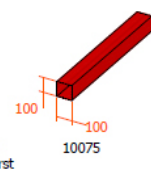
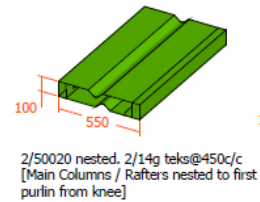
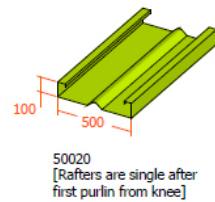
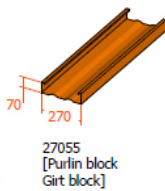
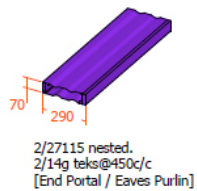
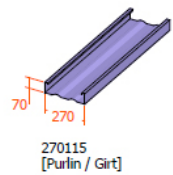
PURLIN BRACE 6



EAVE PURLIN BRACE 7



PURLIN TO END RAFTER 8



Project Number B5238  
Date 13/11/2015  
Drawn by Sim  
Not to scale  
© Formsteel Technologies 2015

Details

fs06

# FORMSTEEL FREIGHT LOADS





# SKETCHES







## NOTES

## ALRITE MEMBERSHIPS:



**Alrite Steel & Services NZ Ltd.**

Tel +64 9 270 2008

Fax +64 9 270 2009

Mob +64 27 666 4021

[bs@alrite.co.nz](mailto:bs@alrite.co.nz)

[www.alrite.co.nz](http://www.alrite.co.nz)